

HELPING the human EYE.

Heine Ophthalmoscopes 2021

SA Distributor



SURGICAL AND MEDICAL SUPPLIES PTY LTD

16 Kensington Road Rose Park SA 5067

Telephone: (08) 8332 1666 Fax: (08) 8332 5132







Email: sales@surmed.com.au

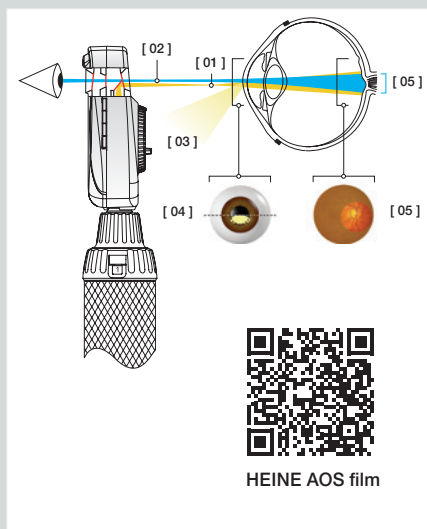
Website: www.surmed.com.au



HEINE Direct Ophthalmoscopes



	BETA 200S	BETA 200	BETA 200 M2	K180 Opt. 1	K180 Opt. 2	mini 3000
Optical System	Aspherical	Aspherical		Conventional		Conventional
Illumination	XHL or LED ^{HQ}	XHL or LED ^{HQ}	XHL	XHL		XHL or LED ^{HQ}
Apertures						
Corrective lenses	- 36 to +38 D, 74 single diopter steps, 28 Lenses	- 35 to +40 D, 27 diopter steps, 27 Lenses		- 35 to +40 D, 27 diopter steps, 27 Lenses		- 20 to +20 D, 18 diopter steps, 18 Lenses
Dust protection	Dustproof	Dustproof		Dust protected		Dust protected
Frame system made of	Aluminium	Aluminium		Plastic		Plastic
Instrument size	Professional	Professional		Professional		Compact
Handle options / power sources	<ul style="list-style-type: none"> • Battery handle (XHL only) • USB rechargeable handle • Rechargeable handle with table charger • EN 200 / EN 200-1 	<ul style="list-style-type: none"> • Battery handle (XHL only) • USB rechargeable handle • Rechargeable handle with table charger • EN 200 / EN 200-1 		<ul style="list-style-type: none"> • Battery handle • USB rechargeable handle • Rechargeable handle with table charger • EN 200 / EN 200-1 		<ul style="list-style-type: none"> • Battery handle • Rechargeable handle with table charger
Catalogue page	043	045		048		050



“Aspherical Optical System” (AOS) exclusively from HEINE eliminates corneal and iris reflexes to provide large, crisp and glare-free fundus images.

[01] Flat, elliptical illumination beam produced by HEINE’s Aspherical Optical System.

[02] Observation path.

[03] Redirected iris and corneal reflexes.

[04] The elliptical light beam enters through the lower half of the cornea.

The illumination beam has been separated from the observation beam (Gullstrand-Principle). All reflexes are diverted away from the observation beam due to the curvature of the reflective cornea. Due to the flat, compressed form of the light beam, a maximum amount of light enters through the pupil.

[05] Once past the anterior chamber, the light beam opens up dramatically to illuminate a large area of the retina.

HEINE BETA® 200S LED Ophthalmoscope

Superior aspherical optics with LED^{HQ} illumination

LED^{HQ}
LED NOW IN HEINE QUALITY.



Exclusive dustproof design protects the precision optical components and ensures maintenance-free operation. The BETA 200/200S Ophthalmoscopes are the only instruments with an aluminium frame system. Optical components are flush-mounted on a cast aluminium frame, eliminating misalignment and making the instrument shock-resistant. The BETA 200S LED has virtually unlimited hours of working life. No need to ever replace bulbs. Maintenance-free for a lifetime.

- ✦ **Exclusive Aspherical Optical System (AOS).**
- ✦ **There’s LED. And there’s LED^{HQ}.** HEINE has set a new standard which maintains that only the best is good enough, from the selection of materials to processing, from light intensity to dimmability, and from thermal management to a colour rendering index as high as possible. **That’s what we call LED in HEINE Quality – or LED^{HQ}.**
- ✦ **Special optical interface to precisely integrate the LED illumination with the optical system** to ensure bright, homogeneous light during examinations.
- ✦ **The BETA 200S Ophthalmoscope** accommodates higher refractive errors with a **28 single lenses Rekoss Disc** and features a 74 single step design on a non-continuous wheel avoiding extreme diopter jumps.
 - + in 1 D steps: +1 through +38D
 - in 1 D steps: –1 through –36D
- ✦ **Patented, unique, stepless dimming** from 3 % to 100 % with practical one-finger operation.
- ✦ **No stray light due to the recessed, multi-coated viewing window** – eliminates distractions.
- ✦ **Precise one-hand control of the instrument.** Ergonomic design offers flexibility while examining.
- ✦ **Suitable for large as well as small or undilated pupils.**
- ✦ **Ergonomic design** fits the orbita comfortably, and blocks out ambient light.
- ✦ **Full functionality of the BETA 200S LED is guaranteed with BETA Rechargeable Handles and the EN 200 / EN 200-1 Wall Transformers.**

BETA 200S with 7 apertures



Cobalt blue filter, fixation star with polar coordinates, large spot, small spot, pinhole, slit, hemisphere



With red-free filter

- ✦ **Also available with XHL Xenon Halogen illumination.** Bright illumination and authentic colour rendering; for other technical specifications see BETA 200S LED Ophthalmoscope.

HEINE BETA 200S Diagnostic Sets/Kits

With XHL or LED^{HQ} illumination**Set includes: BETA 200S Ophthalmoscope,**

1 spare bulb for XHL version, hard case.



	2.5V XHL	3.5V XHL	LED
BETA battery handle	C-261.10.118		
BETA4 USB rechargeable handle with USB cord and plug-in power supply		C-261.27.388	C-261.28.388
BETA4 NT rechargeable handle with NT4 table charger		C-261.23.420	C-261.24.420



Without case

NEW!

BETA 200S Ophthalmoscope with	2.5V XHL	3.5V XHL	LED
BETA battery handle	C-010.10.118		
BETA4 USB rechargeable handle with USB cord and plug-in power supply		C-010.27.388	C-010.28.388

**Set includes: BETA 200S Ophthalmoscope, BETA 200 Streak Retinoscope,**

1 spare bulb for XHL version, hard case.

	2.5V XHL	3.5V XHL	LED
BETA battery handle	C-262.10.118		
BETA4 USB rechargeable handle with USB cord and plug-in power supply		C-262.27.388	C-262.28.388
BETA4 NT rechargeable handle with NT4 table charger		C-262.23.420	C-262.24.420

∴ For further information on the HEINE BETA 200 Retinoscope, please see page 053.

HEINE BETA® 200 LED Ophthalmoscope

Superior aspherical optics with LED^{HQ} illumination

LED^{HQ}
LED NOW IN HEINE QUALITY.


The ophthalmoscope with unique aspherical optics and all features of the BETA 200S LED, but:

- Without macula aperture (pinhole)
- The BETA 200 Ophthalmoscope accommodates higher refractive errors with a 27 single lenses Rekoss Disc.

+ in 1 D steps: 1 – 10	15	20	40	D
– in 1 D steps: 1 – 10	15	20	25	35 D
- Full functionality of the BETA 200 LED is guaranteed with BETA Rechargeable Handles and the EN 200 / EN 200-1 Wall Transformers.
- Also available with XHL Xenon Halogen illumination. Bright illumination and authentic colour rendering; for other technical specifications see BETA 200 LED Ophthalmoscope.

BETA 200 with 6 apertures



Slit, fixation star with polar coordinates, cobalt blue filter, large spot, small spot, hemispherical spot



With red-free filter

HEINE BETA 200 Ophthalmoscope Sets/Kits

With XHL or LED^{HQ} illumination


Set includes: BETA 200 Ophthalmoscope,
1 spare bulb for XHL version, hard case.



	2.5V XHL	3.5V XHL	LED
BETA battery handle	C-144.10.118*		
BETA4 USB rechargeable handle with USB cord and plug-in power supply		C-144.27.388	C-144.28.388
BETA4 NT rechargeable handle with NT4 table charger		C-144.23.420	C-144.24.420

* Available with large battery handle X-001.99.120 (doesn't fit into hard cases). Please specify with your order.

NEW!

BETA 200 Ophthalmoscope with	2.5V XHL	3.5V XHL	LED
BETA battery handle	C-011.10.118		
BETA4 USB rechargeable handle with USB cord and plug-in power supply		C-011.27.388	C-011.28.388



Without case

HEINE BETA 200 Diagnostic Sets/Kits

With XHL or LED^{HQ} illumination

Set includes: BETA 200 Ophthalmoscope, BETA 200 Streak Retinoscope,
1 spare bulb for XHL version, hard case.

	2.5V XHL	3.5V XHL	LED
BETA battery handle	C-145.10.118		
BETA4 USB rechargeable handle with USB cord and plug-in power supply		C-145.27.388	C-145.28.388
BETA4 NT rechargeable handle with NT4 table charger		C-145.23.420	C-145.24.420

∴ For further information on the HEINE BETA 200 Retinoscope, please see page 053.



Set includes: BETA 200 Ophthalmoscope, BETA 400 F.O. Otoscope,
1 set (4 pcs.) of reusable tips, 5 of both AllSpec disposable tips 2.5 and 4 mm Ø,
one spare bulb each for XHL version, hard case.

	2.5V XHL	3.5V XHL	LED
BETA battery handle	A-153.10.118		
BETA4 USB rechargeable handle with USB cord and plug-in power supply		A-153.27.388	A-153.28.388

Also available as a kit with
EN 200 Wall Transformer (page 145)



Without case

Kit includes: BETA 200 Ophthalmoscope, BETA 400 F.O. Otoscope,
1 set (4 pcs.) of reusable tips, 5 of both AllSpec disposable tips 2.5 and 4 mm Ø,
one spare bulb each for XHL version.

	3.5V XHL	LED
2x BETA4 NT rechargeable handle with NT4 table charger	A-153.23.422	A-153.24.422

∴ For further information on the HEINE BETA 400 F.O. Otoscope, please see page 011.

HEINE BETA 200 Diagnostic Sets/Kits

With XHL or LED^{HQ} illumination


Set includes: BETA 200 Ophthalmoscope, BETA 200 F.O. Otoscope, 1 set (4 pcs.) of reusable tips, 5 of both AllSpec disposable tips 2.5 and 4 mm Ø, one spare bulb each for XHL version, hard case.

	2.5V XHL	3.5V XHL	LED
BETA battery handle	A-132.10.118		
BETA4 USB rechargeable handle with USB cord and plug-in power supply		A-132.27.388	A-132.28.388



Without case

Also available as a kit with
EN 200 Wall Transformer (page 145)

Kit includes: BETA 200 Ophthalmoscope, BETA 200 F.O. Otoscope, 1 set (4 pcs.) of reusable tips, 5 of both AllSpec disposable tips 2.5 and 4 mm Ø, one spare bulb each for XHL version, hard case.

	3.5V XHL	LED
2x BETA4 NT rechargeable handle with NT4 table charger	A-132.23.422	A-132.24.422

∴ For further information on the HEINE BETA 200 F.O. Otoscope, please see page 013.



Set includes: BETA 200 Ophthalmoscope (XHL or LED), BETA 100 Diagnostic Otolaryngoscope (XHL), 1 set (6 pcs.) of reusable specula, 10 UniSpec disposable specula, 4 mm dia., one spare bulb each for XHL version, hard case.

	2.5V XHL	3.5V XHL	3.5V XHL/LED*
BETA battery handle	A-234.10.118		
BETA4 USB rechargeable handle with USB Cord and plug-in power supply		A-234.27.388	A-234.25.388
BETA4 NT rechargeable handle with NT4 table charger		A-234.23.420	A-234.25.420

*BETA 100 Otolaryngoscope with XHL illumination and BETA 200 LED Ophthalmoscope with LED illumination.

∴ For further information on the HEINE BETA 100 Diagnostic Otolaryngoscope, please see page 020.

HEINE K180 Ophthalmoscope

Standard direct ophthalmoscope



A full-featured instrument at an economical price.

- ✦ **Precision spherical HEINE optics.** Corneal and iris reflexes are eliminated.
- ✦ **XHL Xenon Halogen Technology.** Bright, white light. Clear retinal image.
- ✦ **Range of lenses: 27 lenses from -35D to +40D.** Brilliant image even at high corrections.

+ in 1 D steps: 1 – 10	15	20	40	D
– in 1 D steps: 1 – 10	15	20	25	35 D

- ✦ **Ergonomical shape.** The instrument fits the orbita comfortably.
- ✦ **Soft orbital rest.** Steadies the instrument and protects your glasses.
- ✦ **Choice of 5 apertures.** For both large and small pupils. Choice of fixation star or cobalt blue filter for corneal examination.
- ✦ **Dust resistant housing.** Maintenance-free.
- ✦ **High-impact polycarbonate housing for durability.**

K180 apertures



Aperture wheel 1:
Slit, red-free filter, fixation star with polar coordinates, large spot, small spot



Aperture wheel 2:
Slit, red-free filter, cobalt blue filter, large spot, small spot

HEINE K180 Ophthalmoscope Sets

Set includes: K180 Ophthalmoscope with aperture wheel 1, soft pouch.



	2.5V XHL	3.5V XHL
BETA battery handle	C-182.10.118	
BETA4 USB rechargeable handle with USB cord and plug-in power supply		C-182.27.388
BETA4 NT rechargeable handle with NT4 table charger		C-182.23.420

NEW! Set includes: K180 Ophthalmoscope with aperture wheel 2, soft pouch.



	2.5V XHL	3.5V XHL
BETA battery handle	C-183.10.118	
BETA4 USB rechargeable handle with USB cord and plug-in power supply		C-183.27.388
BETA4 NT rechargeable handle with NT4 table charger		C-183.23.420

HEINE K180 Diagnostic Sets



Set includes: K180 Ophthalmoscope in standard version with aperture wheel 1, K180 F.O. Otoscope, 1 set (4 pcs.) of reusable tips, hard case.

	2.5V XHL	3.5V XHL
BETA battery handle	A-279.10.118	
BETA4 USB rechargeable handle with USB cord and plug-in power supply		A-279.27.388
BETA4 NT rechargeable handle with NT4 table charger		A-279.23.420

∴ For further information on the HEINE K180 F.O. Otoscope, please see page 015.

HEINE mini 3000® Ophthalmoscope

Compact pocket ophthalmoscope with XHL or LED^{HQ} illumination
LED^{HQ}
 LED NOW IN HEINE QUALITY.


mini 3000 apertures


 Fixation star, large spot, small spot,
 hemispherical spot, red-free filter

Modern pocket ophthalmoscope with concentrated bright light for perfect illumination, a brilliant image and accurate colour rendering. Fixation star aperture with grey filter for reducing the light intensity. Excellent optics and best colour rendering in minimum dimensions, ideal for rounds and house calls. Can be used with the mini 3000 handle system. Available in black and blue.

Features for both instruments (XHL and LED):

- ∴ **HEINE optics produce crisp, clear images of the whole area under examination** and minimise reflections.
- ∴ **5 different apertures.** A full-function instrument incl. fixation star.
- ∴ Grey filter for light-sensitive patients.
- ∴ **Range of lenses: 18 lenses from -20 D to +20 D.**

+	1	2	3	4	6	8	10	15	20 D
-	1	2	3	4	6	8	10	15	20 D
- ∴ **Easy workflow**, because ophthalmoscopy is possible without dilation of the pupils.
- ∴ **Attachment clip with integrated on/off switch.** Switches off automatically when returned to the pocket.
- ∴ **Replaceable batteries.** Size AA, or optional rechargeable battery with mini NT table charger.*
- ∴ **2-piece handle and head.** Easy to maintain, flexible.
- ∴ **Award-winning design.** Maximum quality with minimum dimensions.

Special features of the LED instruments:

- ∴ **Maintenance-free**, no need to ever replace the LED.
- ∴ LED Thermal management for a **consistent light output throughout the whole working life.**
- ∴ **There's LED. And there's LED^{HQ}.** HEINE has set a new standard which maintains that only the best is good enough, from the selection of materials to processing, from light intensity and thermal management to a colour rendering index as high as possible. **That's what we call LED in HEINE Quality – or LED^{HQ}.**
- ∴ **Exclusive Battery Performance Indicator:** When the instrument is switched on, the maximum light intensity is shown, then the light intensity is regulated down to the level that corresponds to the current charge status of the battery so you know when your batteries need changing.
- ∴ **Fade-Out Feature:** brightness reduces slowly even with low residual capacity, for even more efficient use of dry or rechargeable batteries.
- ∴ **Operation time typ. 10 hours.** The batteries need to be changed less often and the rechargeable batteries last longer.



*To upgrade to a rechargeable instrument with mini NT table charger, please see page 148.



HEINE mini 3000 pocket instruments – a complete range of quality diagnostic instruments for your pocket. Available in black or blue. Please specify the colour you prefer when ordering. If not otherwise specified, we will supply black instruments.

HEINE mini 3000 Diagnostic Sets/Kits



Set includes: mini 3000 Ophthalmoscope, hard case.

	2.5V XHL	2.5V LED
mini 3000 battery handle with batteries	D-852.10.021	D-885.21.021



Without case

mini 3000 Ophthalmoscope with	2.5V XHL	2.5V LED
★ mini 3000 battery handle with batteries	D-001.71.120	D-008.71.120
mini 3000 rechargeable handle (please order mini NT table charger separately)	D-001.71.200	D-008.71.200



[01]

Set/Kit includes: mini 3000 Ophthalmoscope, mini 3000 F.O. Otoscope,
1 set (4 pcs.) of reusable tips, 5 of both AllSpec disposable tips 2.5 and 4 mm Ø.

	2.5V XHL	2.5V LED
2 mini 3000 battery handles with batteries with hard case [01]	D-873.11.021	D-886.11.021
2 mini 3000 rechargeable handles and mini NT table charger, without case [02]	D-859.11.022*	D-860.11.022*

* with this Art. No. only available in black



[02]

Without case

∴ For further information on the HEINE mini 3000 F.O. Otoscope, please see page 016.



[03]

Set includes: mini 3000 Ophthalmoscope, mini 3000 Otoscope,
1 set (4 pcs.) of reusable tips, 5 of both AllSpec disposable tips 2.5 and 4 mm Ø.

	2.5V XHL
2 mini 3000 battery handles with batteries with hard case [03]	D-873.21.021

∴ For further information on the HEINE mini 3000 Otoscope, please see page 023.



Further articles / Accessories

HEINE Ophthalmoscopes

**BETA 200S Ophthalmoscope Head**

2.5V XHL

3.5V XHL

LED

without handle and without
accessories

C-001.30.120

C-002.30.120

C-008.30.120

**BETA 200 Ophthalmoscope Head**

2.5V XHL

3.5V XHL

LED

without handle and without
accessories

C-001.30.100

C-002.30.100

C-008.30.100

**BETA 200 M2 Ophthalmoscope Head**

2.5V XHL

3.5V XHL

without handle and without accessories
Like BETA 200, except with pinhole instead of small spot
and with fixation star aperture without polar coordinates

C-001.30.102

C-002.30.102

**K180 Ophthalmoscope Head**

2.5V XHL

3.5V XHL

with aperture wheel 1, without handle and
without accessories

C-001.30.206

C-002.30.206

with aperture wheel 2, without handle and
without accessories

C-001.30.207

C-002.30.207

**mini 3000 Ophthalmoscope Head**

2.5V XHL

2.5V LED

without handle and without accessories *

D-001.71.105

D-008.71.105

*Available in black and blue. Please specify the colour you prefer when ordering. If not otherwise specified, we will supply black instruments.

**Spare bulb for BETA 200S, BETA 200 and
BETA 200 M2**

2.5V XHL

3.5V XHL

XHL Xenon Halogen spare bulb

X-001.88.069

X-002.88.070

**Spare bulb for K180**

2.5V XHL

3.5V XHL

XHL Xenon Halogen spare bulb

X-001.88.084

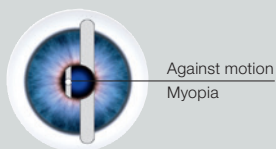
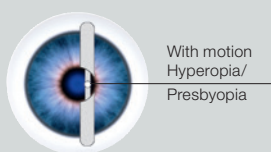
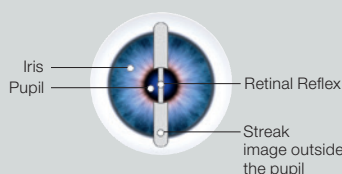
X-002.88.086

**Spare bulb for mini 3000**

2.5V XHL

XHL Xenon Halogen spare bulb

X-001.88.106



Hand-held retinoscopes for objective refraction.

The BETA 200 Retinoscope is used for the exact measurement of the refractive error. Both myopia and hyperopia as well as astigmatism can be measured.

Two versions are available:

The Spot Retinoscope with a round light spot (available only as XHL variant) and the more widely-used Streak Retinoscope with a streak image which simplifies the examination.

*HEINE ParaStop

The BETA 200 Retinoscope with ParaStop features the latest multi-coated optics for an exceptionally bright fundus reflex and easier detection of the neutralisation point. ParaStop was developed by HEINE for the easy, precise selection of a parallel illumination beam. ParaStop simplifies and speeds up the precise detection of cylinder axis. ParaStop also simplifies the verification of the cylinder correction after refraction.

HEINE BETA® 200 LED Retinoscope with HEINE ParaStop®

With LED illumination in HEINE Quality – LED^{HQ}

LED^{HQ}
LED NOW IN HEINE QUALITY.

Homogenous LED illumination for precise streak image quality offers an easy and quick observation of the fundus reflex.



- ✦ ParaStop. Precise, easy selection of a parallel beam* (see above).
- ✦ **Brilliant, precise streak image** with a line width of typically 1.1 mm (ISO 12865 Standard < 1.5 mm) and a line length of 35 mm for a very bright, readily visible fundus reflex.
- ✦ **There's LED. And there's LED^{HQ}.** HEINE has set a new standard which maintains that only the best is good enough, from the selection of materials to processing, from light intensity to dimmability, and from thermal management to a colour rendering index as high as possible. **That's what we call LED in HEINE Quality – or LED^{HQ}.**
- ✦ **Patented, unique, stepless dimming** from 3 % to 100 % with practical one-finger operation.
- ✦ **Ergonomic shape.** Protects the examiner's orbita from stray light.
- ✦ **Metal controls.** Long-lasting.
- ✦ **Single control for vergence and rotation.** Comfortable operation.
- ✦ **Maintenance-free.** Dustproof. LED with virtually unlimited hours of working life.
- ✦ **Integrated polarisation filter.** Eliminates stray light and internal reflexes for a brighter fundus reflex.
- ✦ **Detachable brow rest.** Increased comfort and control during examination.
- ✦ **Holder for fixation cards (optional).** For dynamic retinoscopy.
- ✦ **Full functionality of the BETA 200 LED is guaranteed with BETA Rechargeable Handles and the EN 200 / EN 200-1 Wall Transformers.**
- ✦ **Also available with XHL Xenon Halogen illumination.** Bright illumination and authentic colour rendering; for other technical specifications see BETA 200 LED Retinoscope.

HEINE BETA 200 Diagnostic Sets/Kits



Set includes: BETA 200 Streak Retinoscope,
1 spare bulb for XHL version, hard case.



	2.5V XHL	3.5V XHL	LED
BETA battery handle	C-034.10.118*		
BETA4 USB rechargeable handle with USB cord and plug-in power supply		C-034.27.388	C-034.28.388
BETA4 NT rechargeable handle with NT4 table charger		C-034.23.420	C-034.24.420

* Also available with large battery handle X-001.99.120 (doesn't fit into hard cases). Please specify with your order.



Without case

NEW!

BETA 200 Streak Retinoscope with	2.5V XHL	3.5V XHL	LED
BETA battery handle	C-014.10.118		
BETA4 USB rechargeable handle with USB cord and plug-in power supply		C-014.27.388	C-014.28.388



Set includes: BETA 200 Streak Retinoscope, BETA 200S Ophthalmoscope,
1 spare bulb for each instrument for XHL version, hard case.

	2.5V XHL	3.5V XHL	LED
BETA battery handle	C-262.10.118		
BETA4 USB rechargeable handle with USB cord and plug-in power supply		C-262.27.388	C-262.28.388
BETA4 NT rechargeable handle with NT4 table charger		C-262.23.420	C-262.24.420

∴ For further information on the HEINE BETA 200S Ophthalmoscope, please see page 043.



Set includes: BETA 200 Streak Retinoscope, BETA 200 Ophthalmoscope,
1 spare bulb for each instrument for XHL version, hard case.

	2.5V XHL	3.5V XHL	LED
BETA battery handle	C-145.10.118		
BETA4 USB rechargeable handle with USB cord and plug-in power supply		C-145.27.388	C-145.28.388
BETA4 NT rechargeable handle with NT4 table charger		C-145.23.420	C-145.24.420

∴ For further information on the HEINE BETA 200 Ophthalmoscope, please see page 045.

