



Dropside Options



Dropside Options

We understand that there are different ways that patients must be transported and procedures performed. Safety comes first, which is why we've developed a selection of side rail options, to ensure you can have the right outcome for your department's requirements.



16 Riser Dropsides



7 Riser Dropsides



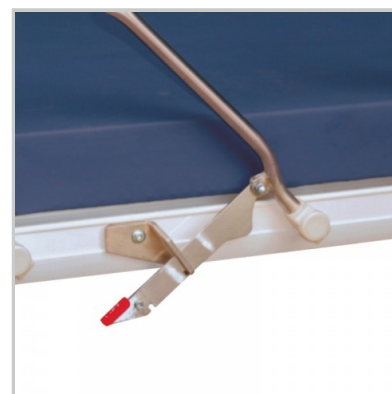
Horizontal Rail Dropsides



Split Dropsides



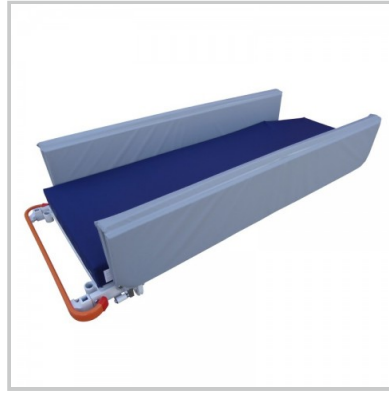
Flush Fold Dropsides



Mid-Position Catch



Padded Dropside
Bumpers



Padded Dropside Pockets



Glideaway Drop Sides

16 Riser Dropsides

Close up the spacing's with extra risers for a safe side rail for patients requiring extra support.

Features

- 100mm riser spacing's
- Requires a 100mm mattress
- Can be mounted to fold towards head or foot end

Product Code

- MPT-CA-16RD

Summary

For the case of challenging patients requiring a higher level of support and protection from egress, these dropsides are a popular choice. They can be mounted to fold down from either direction, and have mostly been requested to be mounted closest to the foot end, which allows access to the patients head while the dropsides can remain in the raised position. There is no gap at the foot end if used with our high [end board](#).



7 Riser Dropsides

Close up the spacing's to 250mm centers with extra risers for a safe side rail for patients requiring extra support.

Features

- 250mm riser spacing's
- Can be mounted to fold towards head or foot end

Product Code

- MPT-CA-7RD

Summary

For the case of challenging patients requiring a higher level of support and protection from egress, these dropsides are a popular choice. They are longer overall than the standard 5 riser dropsides and can be mounted to fold down from either direction.



Horizontal Rail Dropsides

Upgrade the standard vertical riser style dropsides to a horizontal bed rail system.

Product Code

- MPT-CA-HRD

Summary

Some facilities much prefer the standard bed style of dropside, which consists of long horizontal tubes all correctly spaced that fold down together with no crush points. This dropside can be mounted in both a flush folding position for special patient transfers or higher non-flush fold position for excellent patient support.



Split Dropsides

Enhance access to either the head or foot end of the patient without compromising safety.

Product Code

- MPT-CA-SDS

Summary

Used for both special procedures or patients requiring high constant protection, any of the four sections of these dropsides can be raised or lowered independently at any time. This allows access to just one quarter of the patient without compromising safety and support that the patient may require.



Flush Fold Dropsides

Mount the standard dropside to fold down flush with trolley top, allowing slide transfer of mattress or horizontal x-ray.

Product Code

- MPT-CA-FFD

Summary

There are circumstances where a facility may slide transfer patients across to other surfaces, or medical imaging requires maximum visibility for lateral x-rays. The flush fold dropside has a smaller hand rail to allow it to lay completely flush with the mattress base and still provide the required finger clearance for ease of use and safety.



Mid-Position Catch

Pair of catches for our Classic style drop-sides with a mid locking position.

Product Code

- MPT-CA-CMP

Summary

In some cases a facility may need to access the patient whilst still providing the best support possible to prevent unwanted patient egress. This mid folding position is the best of both worlds, locking in low enough for the carer to be able to work over the rail and adequately reach the patient.



Padded Dropside Bumpers

Provide extra protection for recovering patients with a padded bumper system.

Features

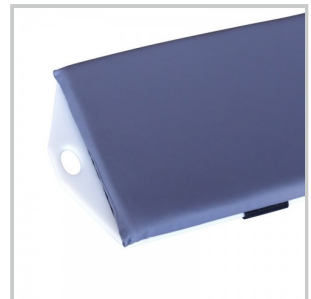
- 25mm high density foam covered in welded stretch material
- Mounted to a stiff hospital grade plastic back board with wall storage hook
- Lift and roll from the inside to the outside of the dropside
- Dropside can still operate with the board still attached.

Product Code

- Premium - MPT-CA-PDB-P

Summary

A recovering or restless patient can cause themselves serious harm on the metal risers and rails of standard dropsides. We have developed some ways for the carer to quickly and easily increase the level of protection and provide a soft, padded surface for patients limbs. Our board system can be flipped to the outside of the stretcher allowing the dropsides to be raised and lowered without having to remove the bumpers from the trolley.



Padded Dropside Pockets

Provide extra protection for recovering patients with these padded pocket bumpers.

Features

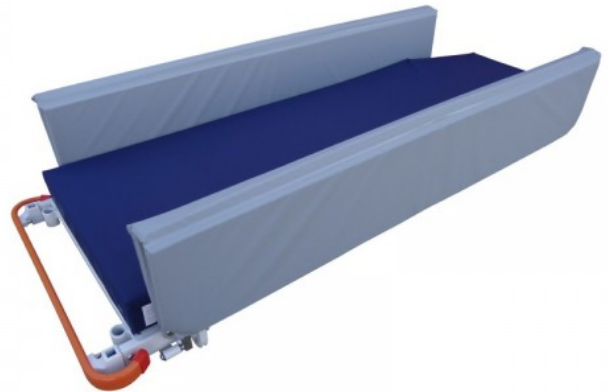
- 25mm high density foam covered in tough welded vinyl
- Pocket design drops over or slides on
- Corner clip studs to retain the bumpers
- Fits both Contour Classic and Deluxe dropside styles

Product Code

- MPT-CA-PDB-D

Summary

A recovering or restless patient can cause themselves serious harm on the metal risers and rails of standard dropsides. We have developed some ways for the carer to quickly and easily increase the level of protection and provide a soft, padded surface for patients limbs. Pockets can slide on over the dropside which are quick to use, however must be removed to lower the sides.



Glideaway Dropsides

Upgrade a Contour Classic transport stretcher with glideaway siderails featuring a zero transfer gap.

Product Code

- Refer to the Contour Deluxe Stretcher

Summary

Remove the standard vertical riser dropsides from the [Contour Classic](#) and upgrade to premium, fully welded stainless steel horizontal rails that glide away with gas dampening, to provide a completely free transfer surface with a zero transfer gap. As these rails fold back underneath the stretcher top, there is nothing to prevent the carer or doctor from standing the closest they can to the patient. Refer to the [Contour Deluxe](#) for all features.



