



# PRODUCT OVERVIEW

*Enhancing quality of life through innovative  
solutions for dysphagia and nutrition.*

# Dysphagia

Ready-to-drink range is available in 3 consistent viscosities: 150 - Mildly Thick, 400 - Moderately Thick and 900 - Extremely thick.

- ✓ **Gluten and Nut Free**
- ✓ **Shelf Stable**
- ✓ **Packaged in the award-winning Dysphagia Cup!**

## Dysphagia Cup Holder

The double handled Dysphagia Cup Holder further empowers people who experience difficulties holding and drinking from a cup.



- ✓ **Ergonomic designed easy-to-hold handles**
- ✓ **Enables independence & restores dignity**
- ✓ **Reusable, microwave and dishwasher safe**
- ✓ **Made in Australia**

## Dysphagia Fast Facts



Swallowing disorders (dysphagia) may affect as much as 22% of people aged 50 and over. This figure increases to 50% of people living in residential aged care facilities.<sup>1</sup>



Dysphagia is common after stroke with around 60% of stroke survivors experiencing trouble swallowing.<sup>1</sup>

<sup>1</sup> [http://www.speechpathologyaustralia.org.au/spaweb/Document\\_Management/Public/Factsheets.aspx?anchor\\_swal](http://www.speechpathologyaustralia.org.au/spaweb/Document_Management/Public/Factsheets.aspx?anchor_swal)



*Flavour Creations products have been well received by residents who have expressed their enjoyment of the variety of flavours on offer. Staff have commented that residents are drinking more as a result which is a great outcome overall."*

**Jonathan Williams,**  
**Burwood East, VIC**



## Cordials LOW SODIUM

- Citrus
- Lime
- Raspberry

Nutrition table is for Raspberry Cordial Level 400<sup>1</sup>

- **Gluten & Nut Free**
- **Energising Clear Fluid**
- **Low Sodium**
- **Fat Free**
- **Dairy Free**
- **FSMP<sup>2</sup>**
- **No Artificial Flavours or Colours**
- **Soy Free**
- **GMO Free**



## Low Sugar Drinks LOW SUGAR

- Lemon
- Lite Grape

Nutrition table is for Diet Lemon Cordial Level 400<sup>1</sup>

- **Gluten & Nut Free**
- **Contains 70% less energy than regular thickened cordials**
- **Fat Free**
- **Low Sodium**
- **Dairy Free**
- **FSMP<sup>2</sup>**
- **No Artificial Flavours or Colours**
- **Soy Free**
- **GMO Free**



## Real Fruit Juices LOW SODIUM

- Apple
- Orange
- Sun

Nutrition table is for Sun Juice Level 400<sup>1</sup>

- **Gluten & Nut Free**
- **Fat Free**
- **Low Sodium**
- **Real Fruit Juice**
- **Energising Clear Fluid**
- **Dairy Free**
- **FSMP<sup>2</sup>**
- **No Artificial Flavours or Colours**
- **Soy Free**
- **GMO Free**



Serving Size: 175mL	Per Serve	Per 100mL
Energy	kJ 424	242
	kcal 102	58
Protein, total	g 0.1	0
- gluten	mg	Not detected
Fat, total	g 0	0
- Saturated fat	g 0	0
Carbohydrates	g 24.3	13.9
- sugars	g 23.9	13.7
- lactose	g 0	0
- galactose	g 0	0
Dietary Fibre	g 1.1	0.6
Sodium	mg 78	45
Potassium	mg 6	4



Serving Size: 175mL	Per Serve	Per 100mL
Energy	kJ 118	68
	kcal 28	16
Protein, total	g 0.2	0.1
- gluten	mg	Not detected
Fat, total	g 0	0
- Saturated fat	g 0	0
Carbohydrates	g 5.8	3.3
- sugars	g 4.1	2.4
- lactose	g 0	0
- galactose	g 0	0
Dietary Fibre	g 1.4	0.8
Sodium	mg 130	80
Potassium	mg 12	7



Serving Size: 175mL	Per Serve	Per 100mL
Energy	kJ 404	231
	kcal 97	55
Protein, total	g 0.7	0.4
- gluten	mg	Not detected
Fat, total	g 0.1	0
- Saturated fat	g 0	0
Carbohydrates	g 22.1	12.7
- sugars	g 20.5	11.7
- lactose	g 0	0
- galactose	g 0	0
Dietary Fibre	g 1.3	0.8
Sodium	mg 69	39
Potassium	mg 130	75



### Functional Juices LOW SODIUM

- Cranberry
- Pear

Nutrition table is for Cranberry drink Level 400.<sup>3</sup>

- Gluten & Nut Free
- 4 g Fibre/serve (Pear Juice)
- Up to 98% Real Fruit Juice (Pear Juice)
- Up to 33% Cranberry (Cranberry Drink)
- Dairy Free
- FSMP<sup>2</sup>
- No Artificial Flavours or Colours
- GMO Free
- Soy Free



Serving Size: 175mL	Per Serve	Per 100mL
Energy	kJ 460	263
	kcal 110	63

Protein, total	g	0.1	0.1
- gluten	mg	Not detected	
Fat, total	g	0	0
- Saturated fat	g	0	0
Carbohydrates	g	26.4	15.1
- sugars	g	24.2	13.8
- lactose	g	0	0
- galactose	g	0	0

Dietary Fibre	g	1.2	0.7
Sodium	mg	220	120
Potassium	mg	46	26

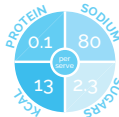


### Water LOW SODIUM

- Water
- Watermelon Water

Nutrition table is for Water Level 400.<sup>3</sup>

- Gluten & Nut Free
- Low Sodium
- Clear Fluid
- Fat Free
- Dairy Free
- FSMP<sup>2</sup>
- No Artificial Flavours or Colours
- Soy Free
- GMO Free



Serving Size: 175mL	Per Serve	Per 100mL
Energy	kJ 55	32
	kcal 13	8

Protein, total	g	0.1	0.1
- gluten	mg	Not detected	
Fat, total	g	0	0
- Saturated fat	g	0	0
Carbohydrates	g	2.4	1.4
- sugars	g	2.3	1.3
- lactose	g	0	0
- galactose	g	0	0

Dietary Fibre	g	1.6	0.9
Sodium	mg	80	46
Potassium	mg	6	3



### Hot Beverages 99% FAT FREE

- White Coffee
- Black Tea
- White Tea

Nutrition table is for White Coffee Level 400.<sup>3</sup>

- Gluten & Nut Free
- Low Sodium (Teas only)
- Clear Fluid (Teas only)
- Low Fat (White Coffee only)
- Fat Free (Teas only)
- Dairy Free (Teas only)
- Real Tea & Coffee
- FSMP<sup>2</sup>
- No Artificial Flavours or Colours
- Soy Free
- GMO Free



Serving Size: 175mL	Per Serve	Per 100mL
Energy	kJ 227	129
	kcal 54	31

Protein, total	g	1.5	0.8
- gluten	mg	Not detected	
Fat, total	g	1.3	0.7
- Saturated fat	g	0.9	0.5
Carbohydrates	g	8.3	4.7
- sugars	g	3.7	2.1
- lactose	g	1.7	1.0
- galactose	g	0	0

Dietary Fibre	g	1.1	0.6
Sodium	mg	250	140
Potassium	mg	1	0



### Creamy UP TO 6 g PROTEIN

- Banana
- Chocolate
- Dairy
- Strawberry

Nutrition table is for Creamy Chocolate Level 400.<sup>3</sup>

- Gluten & Nut Free
- Up to 1.2 kcal/mL
- Up to 6 g Protein/serve
- Source of Protein
- Good Source of Calcium
- Good Source of Vitamin D
- Low Sodium
- FSMP<sup>2</sup>
- No Artificial Flavours or Colours
- Soy Free
- GMO Free



Serving Size: 175mL	Per Serve	Per 100mL
Energy	kJ 743	424
	kcal 178	102

Protein, total	g	5.8	3.3
- gluten	mg	Not detected	
Fat, total	g	7.2	4.1
- Saturated fat	g	2.8	1.6
Carbohydrates	g	22.4	12.8
- sugars	g	18.8	10.7
- lactose	g	3.6	2
- galactose	g	0	0

Dietary Fibre	g	1.8	1.0
Sodium	mg	110	65
Potassium	mg	220	130



### Protein Fortified 15 g PROTEIN

- Caramel
- Lemon Lime

Nutrition table is for Pro Caramel Level 400.<sup>3</sup>

- Gluten & Nut Free
- 15 g Protein/serve
- Low Sodium
- FSMP<sup>2</sup>
- No Artificial Flavours or Colours
- GMO Free
- PRO CARAMEL**
  - 15 kcal/mL
  - Source of Fibre
  - Low Lactose
- PRO LEMON LIME**
  - 0.9 kcal/mL
  - Excellent Source of Fibre
- Soy, Fat & Dairy Free



Serving Size: 175mL	Per Serve	Per 100mL
Energy	kJ 1100	627
	kcal 264	150

Protein, total	g	15.0	8.6
- gluten	mg	Not detected	
Fat, total	g	6.1	3.5
- Saturated fat	g	1.0	0.6
Carbohydrates	g	36.0	20.6
- sugars	g	23.9	13.6
- lactose	g	0	0
- galactose	g	0	0

Dietary Fibre	g	4.0	2.3
Sodium	mg	120	67
Potassium	mg	56	32



### Nutritionally Complete 15 g PROTEIN

- Apple Berry
- Chocolate
- Iced Coffee

Nutrition table is for Apple Berry Level 400.<sup>3</sup>

- Gluten & Nut Free
- Nutritionally Complete
- 1.5 kcal/mL
- 15 g Protein/serve
- 27 Vitamins & Minerals
- Good Source of Protein
- Good Source of Fibre
- Energy
- Low Lactose
- Dairy Free & Low Fat (Apple Berry Only)
- FSMP<sup>2</sup>
- No Artificial Flavours or Colours
- Soy Free & GMO Free



Serving Size: 175mL	Per Serve	Per 100mL
Energy	kJ 1100	626
	kcal 264	150

Protein, total	g	15.0	8.5
- gluten	mg	Not detected	
Fat, total	g	0	0
- Saturated fat	g	0	0
Carbohydrates	g	47.2	27.0
- sugars	g	33.4	19.1
- lactose	g	0	0
- galactose	g	0	0

Dietary Fibre	g	5.0	2.9
Sodium	mg	180	100
Potassium	mg	230	130

## Thickening Solutions

Our thickening powders are the indispensable solution for broad-based dysphagia management.



### instant THICK

Available in single serve sachets, 100 g can, 675 g can and 1.75 kg pail

Nutrition table is for Level 400.<sup>9</sup>

- Gluten & Nut Free
- Potassium Chloride Free
- Sugar Sugar
- No Preservatives
- Dairy Free
- FSMP\*
- No Artificial Flavours or Colours
- Soy Free
- GMO Free



### easythick RAPID

Available in single serve sachets, 650 g can and 2.5 kg box

Nutrition table is for Level 400.<sup>9</sup>

- Gluten & Nut Free
- Potassium Chloride Free
- Sugar Free
- No Preservatives
- Fat Free
- Dairy Free
- FSMP\*
- No Artificial Flavours or Colours
- Soy Free
- GMO Free



### ThickPlus

Available in a 1 kg can

Nutrition table is for Level 400.<sup>9</sup>

- Gluten & Nut Free
- Potassium Chloride Free
- Sugar Free
- Fat Free
- Dairy Free
- FSMP\*
- No Artificial Flavours or Colours
- Soy Free
- GMO Free



Serving Size: 170 - 190mL	Per Serve	Per 100g
Energy	kJ 60	1490
	kcal 14.2	356

Protein, total	g	0.1	1.3
- gluten	mg	Not detected	
Fat, total	g	0	0.1
- Saturated fat	g	0	0
Carbohydrates	g	2.4	59.6
- sugars	g	0.1	3.5
- lactose	g	0	0
- galactose	g	0	0

Dietary Fibre	g	1.1	28.2
Sodium	mg	49	1220
Potassium	mg	7.6	190

Serving Size: 170 - 190mL	Per Serve	Per 100g
Energy	kJ 47	1260
	kcal 11	302

Protein, total	g	0	0
- gluten	mg	Not detected	
Fat, total	g	0	0
- Saturated fat	g	0	0
Carbohydrates	g	2.2	58.8
- sugars	g	0	0
- lactose	g	0	0
- galactose	g	0	0

Dietary Fibre	g	1.1	29.6
Sodium	mg	48	1300
Potassium	mg	6.4	174

Serving Size: 170 - 190mL	Per Serve	Per 100g
Energy	kJ 78	710
	kcal 19	170

Protein, total	g	0.7	6.0
- gluten	mg	Not detected	
Fat, total	g	0	0
- Saturated fat	g	0	0
Carbohydrates	g	0	0
- sugars	g	0	0
- lactose	g	0	0
- galactose	g	0	0

Dietary Fibre	g	8	76
Sodium	mg	440	4000
Potassium	mg	17	150



Enhance the dining experience with Shape It and Shape It Food Moulds.

Contact the Flavour Creations team to help establish protocols to implement Shape It into your service.

### Shape It

- Freeze/thaw stable
- Doesn't affect flavour or colour
- Easily moulds all food & liquids to any shape, size and texture
- Suitable for all texture-modified diets and vegans
- Restore dignity, social engagement and increase compliance



### Shape It Moulds



- Made from 100% food safe silicone with lid
- Dishwasher, microwave, oven & freezer safe
- Versatile - many of the moulds can be used for multiple foods
- Small footprint per portion - less intimidating on the plate
- Meets Australian state-wide food portion size guidelines
- Stackable for efficient use of chiller and storage space
- Even depth throughout the mould portions allows for consistent heating and no dried edges
- Multiple portions per mould to create more efficiencies in the kitchen

Serving Size: 1g	Per Serve	Per 100g
Energy	kJ 12	1150
	kcal 3	276

Protein, total	g	Less than 1g	Less than 1g
- gluten	mg	Not detected	
Fat, total	g	Less than 1g	Less than 1g
- saturated	g	Less than 1g	Less than 1g
Carbohydrates	g	Less than 1g	44.1
- sugars	g	Less than 1g	7.1
Dietary Fibre	g	Less than 1g	47.6
Sodium	mg	5	510

### Shaped Recipe Book



With 100+ recipes, Shaped helps you create beautiful and recognisable texture-modified meals!

## Nutrition

- ✓ **Texture Modified**
- ✓ **Portion Controlled**
- ✓ **Shelf Stable & Ready-to-Eat**
- ✓ **Protein and Energy Dense**
- ✓ **Scientifically Designed Formulations**

Flavour Creations has developed a range of targeted food first nutritional solutions: Nutritionally Complete supplements, protein enhanced and high fibre products. Our scientifically designed formulations are the perfect solution to your dietary needs.

### \*NUTRITIONALLY COMPLETE

Enriched with protein, energy and essential vitamins and minerals, our scientifically designed nutritionally complete products are intended as a sole source of nutrition. Ideal for those with compromised nutritional status, struggling to meet their energy requirements.

**\*Food For Special Medical Purpose (FSMP)** is used to manage the diets of people with certain diseases, disorders or medical conditions. These special foods are intended for people whose nutritional requirements cannot be met by regular foods.

✓ For people whose nutritional requirements cannot be met by normal foods

✓ Sole Source of Nutrition (SSN) or Nutritionally Complete (NC) have minimum and maximum requirements for vitamins and minerals to ensure consumers' nutritional needs are met

✓ FSMP includes thickened beverages and thickening powders and as such all products intended for individuals who have dysphagia

## Fast Facts

Recent studies have estimated that between 20-65% of older adults living in residential care are malnourished, and nearly 75% are at risk of malnutrition. For older adults living at home, up to 10% are likely to be malnourished, and a further 35% are at risk.\*



Malnutrition in the community



Malnutrition in residential aged care facilities

\* <http://www.nutritionaustralia.org/vic/news/2012/08/how-much-malnutrition-costing-your-aged-care-organisation>



AdVital™ is a nutritionally complete powdered supplement specially formulated by an expert team of scientists and dietitians to improve your daily nutritional intake.

AdVital is formulated with only milk based proteins, with the main source being **Whey Protein Isolate**. This pure, high quality protein is easily digested and absorbed into the body.

Designed for food fortification and with a true neutral flavour, AdVital will mix quickly and easily into your favourite food and drinks without altering taste or aroma.

✓ **23 serves in every can**

✓ **137 serves in**

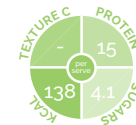
**every pile**

✓ **Australian Made & Owned**



**AdVital**  
**GI = 30 / GL = 4**

- 805 g can
- 4.8 kg pile
- Gluten & Nut Free
- Nutritionally Complete
- 39 kcal/g
- 15 g Protein/serve
- 27 Vitamins & Minerals
- Made with Whey Protein Isolate
- High in Vitamin D
- Suitable for vegetarians
- Neutral Flavour
- One scoop/serve
- Low GI (30) GL (4)
- FSMP\*
- GMO Free



Serving Size: 35g	Per Serve	Per 100g
Energy	kJ 573	1640
	kcal 138	394
Protein, total	g 15.1	43.1
- gluten	mg	Not detected
Fat, total	g 2.1	5.9
- Saturated fat	g 1.9	5.6
Carbohydrates	g 14.8	42.3
- sugars	g 4.1	11.8
- lactose	g 2.7	7.7
- galactose	g 0	0
Dietary Fibre	g 0	0
Sodium	mg 68	190
Potassium	mg 160	450



**NC Supplements**  
**15 g PROTEIN**

- Apple berry
- Chocolate
- Iced Coffee
- Nutrition table is for Apple Berry Level 900\*
- Gluten & Nut Free
- Nutritionally Complete
- 15 kcal/mL
- 15 g Protein/serve
- 27 Vitamins & Minerals
- Good Source of Fibre
- Texture C Smooth Puree
- Dairy Free & Low Fat (Apple Berry only)
- Low Lactose (Chocolate & Iced Coffee only)
- FSMP\*
- No Artificial Flavours or Colours
- Soy Free & GMO Free



Serving Size: 175mL	Per Serve	Per 100mL
Energy	kJ 1100	626
	kcal 264	151
Protein, total	g 15.0	8.5
- gluten	mg	Not detected
Fat, total	g 0	0
- Saturated fat	g 0	0
Carbohydrates	g 47.2	27.0
- sugars	g 38.2	21.8
- lactose	g 0	0
- galactose	g 0	0
Dietary Fibre	g 5	2.9
Sodium	mg 200	120
Potassium	mg 230	130

\* For detailed product information of all our products please visit our website.



## NC™ Smooth Fruits 15 g PROTEIN

- Apple & Plum
- Banana & Mango

Nutrition table is for Apple & Plum<sup>1</sup>

- Gluten & Nut Free
- Nutritionally Complete
- 15 kcal/g
- 15 g Protein/serve
- 27 Vitamins & Minerals
- Texture C Smooth Puree
- Low Fat
- Dairy Free
- FSMP<sup>2</sup>
- No Artificial Flavours or Colours
- Soy Free
- GMO Free



Serving Size: 120g	Per Serve	Per 100g
Energy	kJ 751	626
	kcal 180	150

Protein, total	g	15.0	12.5
- gluten	mg	Not detected	
Fat, total	g	0.1	0.1
- Saturated fat	g	0	0
Carbohydrates	g	23.0	19.2
- sugars	g	16.7	13.9
- lactose	g	0	0
- galactose	g	0	0
Dietary Fibre	g	4.3	3.6
Sodium	mg	170	140
Potassium	mg	230	190



## Fortified Puddings 15 g PROTEIN

- Caramel
- Lemon Lime

Nutrition table is for Pro Caramel Level 900.<sup>3</sup>

- Gluten, Nut & GMO Free
- 15 g Protein/serve
- Low Sodium
- Texture C Smooth Puree
- No Artificial Flavours or Colours & FSMP<sup>2</sup>
- Pro Caramel**
- 15 kcal/mL
- Source of Fibre
- Low Lactose
- Pro Lemon Lime**
- 0 g kcal/mL
- Excellent Source of Fibre
- Dairy, Fat & Soy Free



Serving Size: 175mL	Per Serve	Per 100mL
Energy	kJ 1100	627
	kcal 264	150

Protein, total	g	15.0	8.6
- gluten	mg	Not detected	
Fat, total	g	6.1	3.5
- Saturated fat	g	1	0.6
Carbohydrates	g	36.0	20.6
- sugars	g	24.5	14.0
- lactose	g	0	0
- galactose	g	0	0
Dietary Fibre	g	4.0	2.3
Sodium	mg	120	69
Potassium	mg	56	32



## Recover 10 g PROTEIN

- Watermelon
- Wildberry

Nutrition table is for Watermelon.<sup>1</sup>

- Gluten & Nut Free
- 10 g Protein/serve
- Clear Fluid
- Low Volume Liquid
- Dairy Free
- Fat Free
- Soy Free
- GMO Free



Serving Size: 110mL	Per Serve	Per 100mL
Energy	kJ 607	552
	kcal 146	132

Protein, total	g	10.9	9.9
- gluten	mg	Not detected	
Fat, total	g	0	0
- Saturated fat	g	0	0
Carbohydrates	g	25.1	22.8
- sugars	g	6.7	6.1
- lactose	g	0	0
- galactose	g	0	0
Dietary Fibre	g	0.2	0.2
Sodium	mg	21	19
L-Arginine	mg	880	800



## Fruits with Attitude 8 g PROTEIN

- Apple & Apricot
- Banana & Mango

Nutrition table is for Apple & Apricot.<sup>1</sup>

- Gluten & Nut Free
- 8 g protein per serve
- Dairy Free
- 99% Fat Free
- Low Sodium
- Real Fruit
- Texture C Smooth Puree
- No Artificial Flavours or Colours
- Soy Free
- GMO Free



Serving Size: 110g	Per Serve	Per 100g
Energy	kJ 502	456
	kcal 120	109

Protein, total	g	8.0	7.3
- gluten	mg	Not detected	
Fat, total	g	0.1	0.1
- Saturated fat	g	0.1	0.1
Carbohydrates	g	20.8	18.9
- sugars	g	14.0	12.7
- lactose	g	0	0
- galactose	g	0	0
Dietary Fibre	g	1.1	1.0
Sodium	mg	68	62
Potassium	mg	26	23



## Functional Juice 4 g FIBRE

- Pear Juice

- Gluten & Nut Free
- 4 g Fibre/serve
- 94% Real Pear Juice
- 99% Fat Free
- No Added Sugar
- Low Sodium
- No Artificial Flavours or Colours
- Dairy Free
- Soy Free
- GMO Free



Serving Size: 175mL	Per Serve	Per 100mL
Energy	kJ 362	207
	kcal 87	50

Protein, total	g	0.3	0.2
- gluten	mg	Not detected	
Fat, total	g	0.1	0.1
- Saturated fat	g	0.1	0
Carbohydrates	g	19.5	11.1
- sugars	g	14.4	8.2
- lactose	g	0	0
- galactose	g	0	0
Dietary Fibre	g	4.0	2.3
Sodium	mg	13	7
Potassium	mg	87	50



## Carb Plus Glucose Polymer

- 1 kg can

- Gluten & Nut Free
- Premium Energy Powder
- 3.8 kcal/g
- Dairy Free
- Fat Free
- Low Sodium
- Tasteless
- No Artificial Flavours or Colours
- Soy Free
- GMO Free



Serving Size: 10g	Per Serve	Per 100g
Energy	kJ 160	1600
	kcal 38	384

Protein, total	g	0	0.1
- gluten	mg	Not detected	
Fat, total	g	0	0
- Saturated fat	g	0	0
Carbohydrates	g	9.3	93
- sugars	g	1.5	15
- lactose	g	0	0
- galactose	g	0	0
Dietary Fibre	g	0	0.1
Sodium	mg	2	20
Potassium	mg	0.1	1

## Food Service

Flavour Creations provides a range of innovative food solutions that are shelf stable, gluten & nut free, and portion controlled.



### Ice Cream 3 kcal

- Chocolate
- Strawberry
- Vanilla

Nutrition table is for Vanilla\*

- **Gluten & Nut Free**
- 3 kcal/g
- Contains no less than 10% milk fat
- Level 900 viscosity when thawed
- Texture C Smooth Puree
- No Artificial Flavours or Colours
- Soy Free & GMO Free



### Custards Shelf Stable

- Chocolate
- Banana
- Vanilla

Nutrition table is for Chocolate\*

- **Gluten & Nut Free**
- 0.9 kcal/g
- 2.6 g Protein/serve
- 97% Fat Free
- Texture C Smooth Puree
- No Artificial Flavours or Colours
- Soy Free
- GMO Free

We would love to hear your thoughts and get some feedback!

We're always looking for ways to make our products and services better.

As a loyal customer of Flavour Creations we would love your thoughts. This way we can make sure everyone's experience is as good as it can be.

It will only take a minute!

Email marketing@flavourcreations.com.au

Call our friendly customer service team on 07 3373 3000

Jump onto our social media pages

Or contact your business development manager.

## Support Platforms

We offer a variety of support and educational platforms, eLearning and management systems. Speak with a customer service representative today for more information.

### Websites

**Flavourcreations.com.au** incorporates everything you need to know about the extensive dysphagia, nutrition and food service products. The online store offers a seamless ordering process from product page to check out. With simple and secure payment, reordering functions and order history.

**AdVital** also has its own online presence at **advital.com.au**. This website contains information about the product, recipes, features and benefits, where to buy, plus lots more!

### eLearning

Flavour Creations online resource centre has a range of training modules to help clients continually improve in the quality and level of service provided to their residents and or patients when using Flavour Creations products.

**elearning.flavourcreations.com.au**

### FC@Home

The Flavour Creations @home online registration website has been developed for healthcare professionals who manage dysphagia and nutrition requirements within the community.

**www.fcathome.com.au**

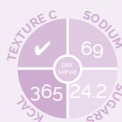
### RIMMS

Resident Inventory Management & Monitoring System is an accurate inventory and ordering management system that can also manage and ensures residents meet fluid requirements, provides, annual budgets and can automatically order stock.

**rimms.flavourcreations.com.au**

### Social Media

Be sure to stay in the know with our social media sites. By following our socials you will always be kept up-to-date with product information, recipes, competitions and more!



Serving Size: 120g Per Serve 100g

Energy	kJ	1520	1270
	kcal	365	305
Protein, total	g	2.4	2
- gluten	mg	Not detected	
Fat, total	g	25.5	21.3
-Saturated fat	g	16.6	13.9
Carbohydrates	g	25.7	21.4
- sugars	g	24.2	20.2
- lactose	g	3.6	3
- galactose	g	0	0
Dietary Fibre	g	1	0.8
Sodium	mg	69	58
Potassium	mg	57	48



Serving Size: 115g Per Serve 100g

Energy	kJ	459	399
	kcal	110	96
Protein, total	g	2.6	2.2
- gluten	mg	Not detected	
Fat, total	g	2.6	2.3
- Saturated fat	g	1.8	1.5
Carbohydrates	g	18.8	16.4
- sugars	g	15.3	13.3
- lactose	g	3.4	3.0
- galactose	g	0	0
Dietary Fibre	g	0.7	0.6
Sodium	mg	72	63
Potassium	mg	160	140





## Flavour Creations is your trusted name in dysphagia and nutrition management

- ✓ Over 21 years as the world leaders in dysphagia management
- ✓ Innovation is at the core of the business
- ✓ Multi award-winning company
- ✓ Large range of flavours for a variety of choice and eliminates flavour fatigue
- ✓ Australian owned and operated
- ✓ Enhancing quality of life

Flavour Creations is a **multi-award winning** Australian business that researches and develops specialist food and drink aimed at improving quality of life for people with dysphagia.

Our wide range of nutrition and dysphagia products offer great taste, maximum nutritional density and choice. We supply to hospitals, residential aged care and directly to customers at home, within Australia and internationally.

let's get  
social

Follow us on Facebook, Instagram, Twitter and Vimeo to keep up-to-date with videos, recipes, articles and much more!

@flavourcreations, @shapeitinstant, @advital



26-32 Murdoch Circuit,  
Acacia Ridge, Brisbane  
QLD 4110 Australia

Email: [sales@flavourcreations.com.au](mailto:sales@flavourcreations.com.au)  
[www.flavourcreations.com.au](http://www.flavourcreations.com.au)

Phone: +61 7 3373 3000

For more detailed information including product descriptions, nutritional information, ordering information, marketing material plus much more visit [flavourcreations.com.au](http://flavourcreations.com.au).

Note: Every effort is made to ensure all product information is accurate at time of publication, however, it is subject to change.  
Please refer to the website for the most up-to-date information. Printed October 2018. M449-01